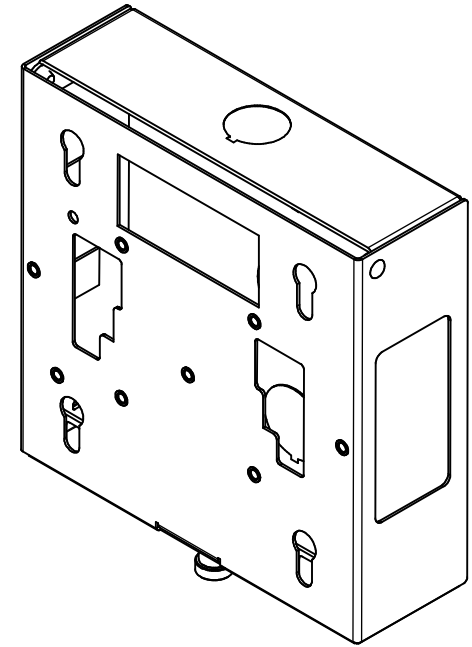
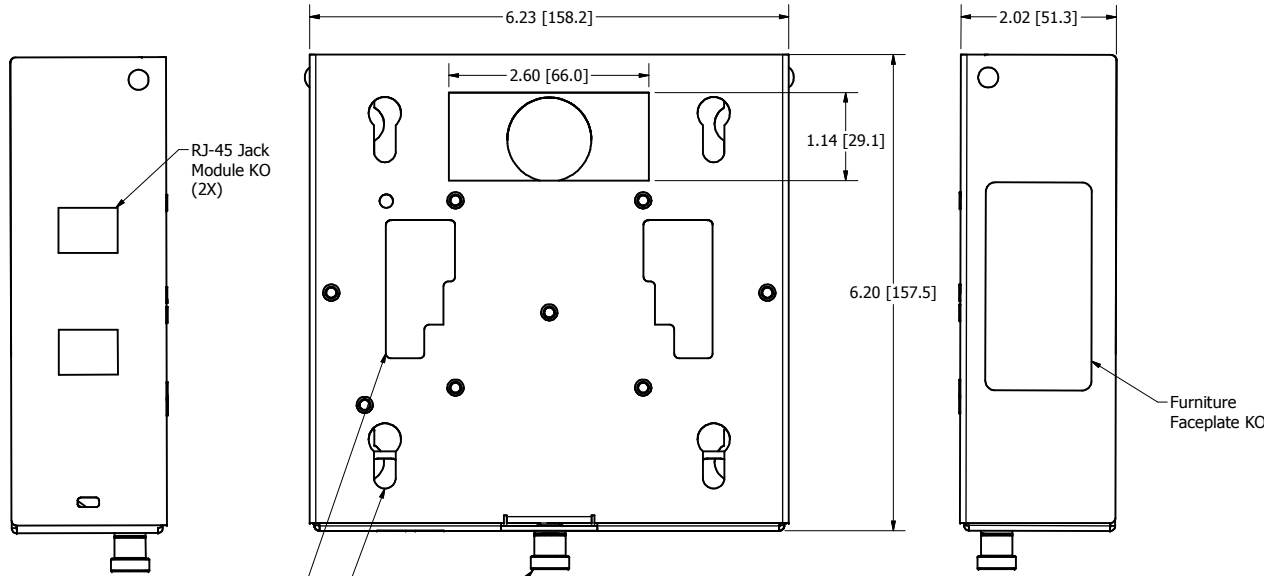
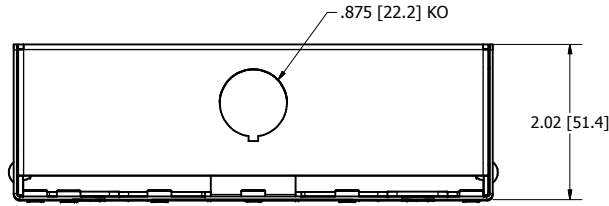
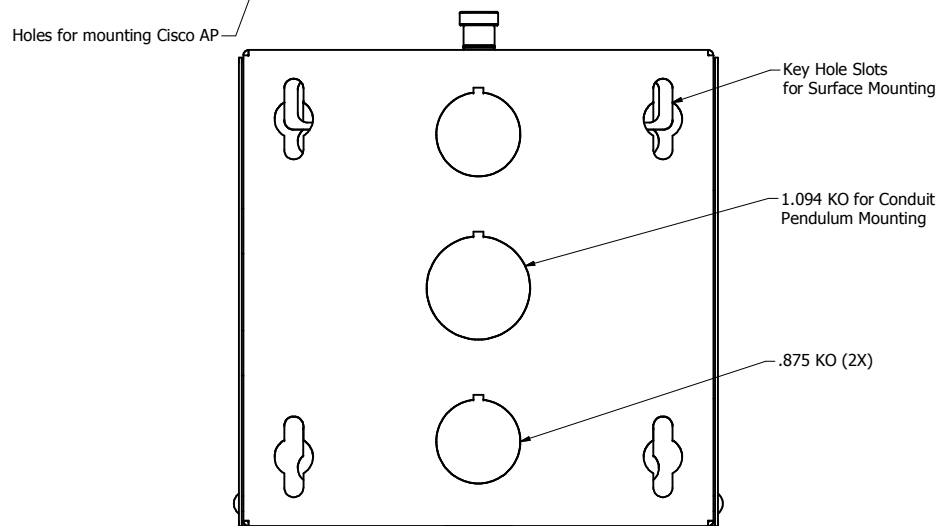


REVISION HISTORY				
ZONE	REV	DESCRIPTION	DATE	APPROVED
All	1	Released	8/16/2017	ATK



ISOMETRIC VIEW



Note:

- Construction: 16 Ga. Powder Coated Steel Base
20 Ga. Powder Coated Steel Cover
- Includes: AP Mount (1)
T-Bar Bracket (1)
#6-32 x 1/4" Pan Head Screw (4)
Cable Tie (1)

DRAWN	KMK	8/9/2016	Oberon, Inc. - 1315 S. Allen St. - State College, PA 16801	
CHECKED	KMK	8/9/2016	TITLE	
QA			Model 900-HC Customer Print	
MFG	KMK	8/9/2016	SIZE	DWG NO
APPROVED	KMK	8/9/2016	C	2477
TOLERANCE:	.0 = +/- .030		SCALE	REV
	.00 = +/- .015			1
	.000 = +/- .005			