



## Mounting Solutions for WiFi Access Points

## Wireless Access Point Mounting Solutions for Hospitality & Retail Environments



Most hotels, restaurants, and retail spaces now have a Wi-Fi network for internal business processes and guest use. Wireless is mission-critical for inventory and order processing, and guests will expect reliable wireless Internet access. The speed and integrity of the Wi-Fi network is key for many businesses, and will only become more vitally important to the business in the future.

The wireless network should be professionally designed and installed with appropriate regard to wireless coverage and physical security. Due to highly publicized security breaches in retail, WAPs should be locked up to prevent unauthorized access. The Payment Card Industry Data Security Standard (PCI-DSS) requirement 9.1.3 states that the operator must "Restrict physical access to wireless access points, gateways, and handheld devices."

### HOTELS

Hotel Wi-Fi is very common and guests expect to find strong wireless signals in all rooms, lobbies, and meeting areas.

Oberon offers a number of solutions for securing APs, including recess ceiling mounts, and suspended ceiling mounts.

### RESTAURANTS

APs are often installed throughout the restaurant to provide effective coverage. Oberon offers a number of solutions to help designer/installer blend the AP into the environment, including paintable wall mount enclosures and paintable vanity covers.

### RETAIL

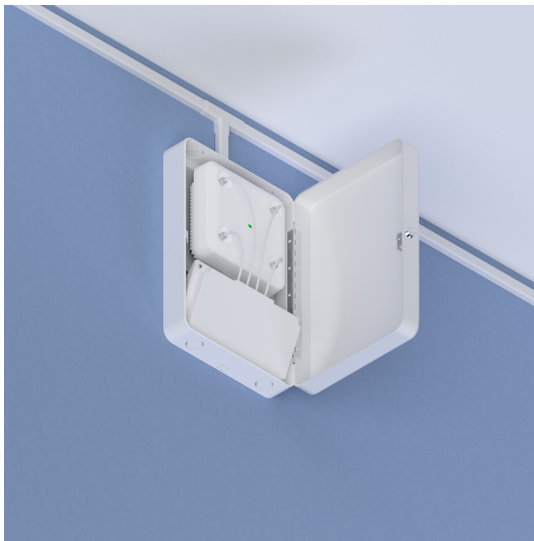
Retail environments will see growth in their Wi-Fi traffic as point of sale applications grow and Facebook Wi-Fi becomes prevalent. Oberon offers a number of solutions for professional, secure placement of APs in retail environments, such as aesthetic suspended ceiling enclosures.

## Model 1047 - Suspended Ceiling Enclosure

The Model 1047 locking, 2' x 2' suspended ceiling tile enclosure mounts and secures wireless access point and DAS remote units with non-detachable or internal antennas. This steel enclosure replaces a standard ceiling tile, and its larger back-box is suitable for larger access points and antennas. The interchangeable door simplifies access point and antenna changes. Access points can be mounted in the door or inside the enclosure with the configurations with the dome.



## Model 1016 - Surface-Mounted Lock-Box



This non-metallic enclosure secures and protects APs, wireless routers, and multiple networking components in offices, hotels, retail locations and other indoor venues. This rugged polycarbonate plastic enclosure is virtually transparent to wireless signals so APs with integrated antennas or small detachable antennas may be protected. The box can be mounted directly over the telecom outlet, and power strip and cabling can be neatly concealed. Cable raceway or conduit can be conveniently terminated.