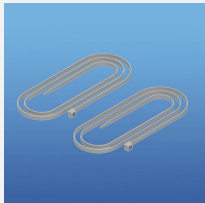


Install M-Frame™ universal Access Point mounts in just about any building or warehouse environment. Oberon's M-Frame™ accessories permit fast and easy installation of M-Frame™ in high bay manufacturing, industrial, and warehouse locations, and work with any of the Antenna Application configurations (1312-AM1, -AM2, AM3, or -RAB).



SKU

Description



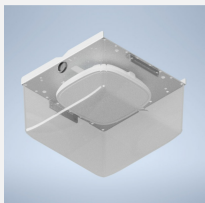
39-1312-ACS

(2) Adjustable Column Straps. 48 in. long, heavy duty nylon straps to fasten M-Frame™ to columns without drilling



39-1312-CWA

(2) Concrete Wall Anchors. Heavy duty 3/8 in. lag screws for anchoring M-Frame™ into hard walls



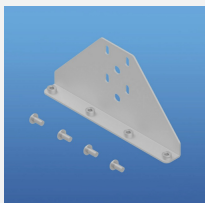
33-1312-DOME

Clear polycarbonate dome attaches to M-Frame™ and protects Access Points



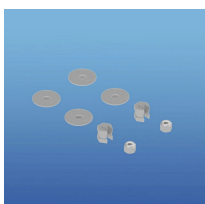
39-1312-QCH

(1) 10 meter long, 1.5mm dia. stainless steel Quad Cable Hanger with releasable locking mechanism. Quickly hang M-Frame™ from ceiling structure. Rated to 44 lbs. of static load



39-1312-RAB

Aluminum Right Angle Bracket for mounting M-Frame™ and attached Access Points horizontally on a vertical surface. Does not include wall attachment hardware



39-1312-TRD

(2) sets, 3/8 in. slide on lock nuts, stop nuts, and fender washers to support M-Frame™ on two 3/8 in. diameter Threaded Rods (not included)



39-1312-UBC

(2) Heavy duty aluminum Universal Beam Clamps to quickly fasten M-Frame™ directly to steel I-beams without drilling



1026-12106-00

12 in. NEMA 4 Plastic Wi-Fi Access Point Enclosure with Hinged Opaque Door



1026-12106-C

12 in. NEMA 4 Plastic Wi-Fi Access Point Enclosure with Hinged Clear Door