

1016-C

18 in. Hi-Bar™ Plastic Wi-Fi Access Point Lock Box with Translucent Door

Collection: Hi-Bar™ | Series: 1016

Non-metallic Hi-Bar™ enclosure secures and protects APs, wireless routers, and multiple networking components in offices, hotels, retail locations and other indoor venues. This rugged polycarbonate plastic enclosure is virtually transparent to wireless signals so APs with integrated antennas or small detachable antennas may be protected. The box can be mounted directly over the telecom outlet, and power strip and cabling can be neatly concealed. Cable raceway or conduit can be conveniently terminated.

Accessories

- [39-1016-ANTPLATE](#) - Articulating Antenna Mount for Oberon Model 1016 Series Wi-Fi Access Point lock boxes
- [39-1016-SPKRMNT](#) - Bracket to mount the Model 1016 Wi-Fi AP Lock Box onto a speaker stand



Features & Benefits

- Accommodates most vendors' enterprise access points with external antennas
- Locking, fully-hinged door
- Simplify code, industry directives, policy, and aesthetics compliance

Technical Specifications

- Design: AP enclosure designed to be surface mounted on hard-lid ceilings or walls. Designed to accommodate APs with integrated or non-detachable antennas and external antennas
- Performance: Ventilated, paintable, impact resistant polycarbonate plastic enclosure is virtually transparent to wireless signals
- Oberon Hi-Bar shaped locking, fully hinged door, keyed alike
- Universal T-bar for most vendors APs
- Opening in back allows for placement directly over outlet
- Twist outs in sidewalls for conduit or raceway
- Construction: UL 94-V0 Classified polycarbonate. Textured white body and door
- Size: 12 x 18 x 5.15 in. (305 x 457 x 131 mm)

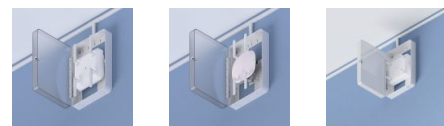
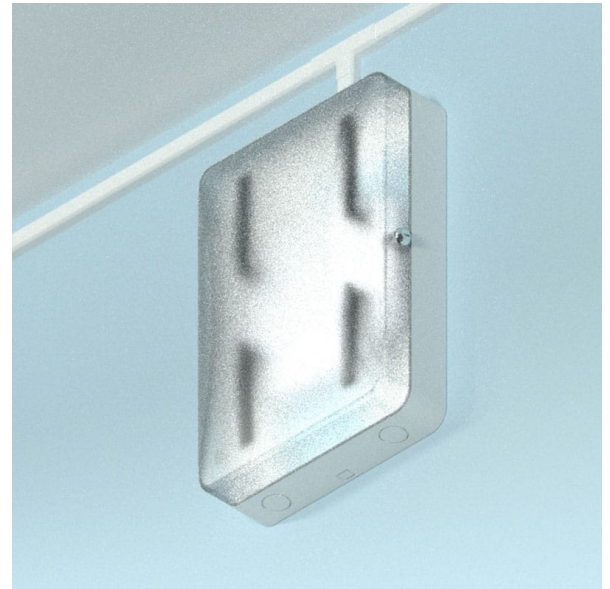
Fits the following AP's:

- Aerohive**
 AP110/120, AP20, AP250, AP320, AP330, AP340/350, AP370
- Arista**
 C-230, C-260
- Aruba**
 AP-134, AP-135, AP-205, AP-205H, AP-214, AP-215, AP-224, AP-225, AP-228, AP-303, AP-305, AP-314, AP-315, AP-324, AP-325, AP-334, AP-335, AP-344, AP-345, AP-504, AP-505, AP-514, AP-515, AP-535, AP-555
- Cisco**
 1600e/2700e/3500e/3600e/3700e/3700p Series, 1600i/1700i/2600i/2700i/3500i/3600i/3700i Series, 1810W Series, 1815W, 1830e/1850e Series, 1830i/1850i Series, 2800e/3800e Series,

Have questions about any of our solutions?

Contact us at **877-867-2312** or Sales@oberoninc.com

Shown with AP (not included)



3D view for 1016-C →

Measurements (Maximum values*):

Width: 12 in.
 Back-box: xx in.
 Height: 18 in. Depth: 5.15 in.
 Item Weight: 5 lbs.
 Shipping Weight: 6 lbs.

Includes:

- (1) Unit
- (1) T-bar bracket
- (2) Keys for lock
- (2) 1/2 in. Nylon spacer
- (2) #6 x 7/8 in. screw
- (2) #6 x 1/4 in. screw
- Installation instructions

2800e/3800e Series with DART Connector, 2800i/3800i Series, 4800 Series, 9115AXE, 9115AXI, 9117AX, 9120AXE, 9120AXI, 9130AXE, 9130AXI, AIR-ANT2566P4W-R antenna

Corning Spidercloud

SCRN-310, SCRN-320/SCRN-220

Extreme Networks

AP305C, AP310e, AP3705i, AP3710e, AP3710i, AP3715e, AP3715i, AP3765e, AP3765i, AP3767e, AP3801i, AP3805e, AP3805i, AP3825e, AP3825i, AP3865e, AP3935e, AP3935i, AP3965e, AP3965i, AP410C, AP410e, AP410i, AP505i / AP510i, AP510C, AP510e, AP650

Meraki

MR32/34/42, MR33, MR52/53, MR55/56, MR62

Mist

AP41, AP43

Ruckus

R310, R320, R510, R550, R610, R710, R720, R850, ZoneFlex H500

Ubiquiti

UniFi UAP-AC-HD, UniFi UAP-XG