

# 33-ANT-CVR-WH

White, paintable, ABS plastic Vanity Cover for Wi-Fi antennas and APs

Collection: **Vanity Covers** | Series:

Customize the appearance of the popular APs and antennas with Oberon's 33-ANT-CVR-WH and 33-ANT-CVR-C. The vanity cover is made from a plastic transparent to wireless signals, and can be attached directly to the wall. The white cover has a UV cap to prevent degradation for outdoor installations. The cover is paintable so you can customize the color to partially conceal the AP or compliment interior color schemes. Outdoor rated paint must be used for outdoor installations. Coloring the vanity cover does not void the manufacturer's warranty. Includes screw caps and trim.



## Features & Benefits

- The vanity cover is virtually transparent to wireless signals
- Vanity covers are paintable using an enamel spray paint such as Krylon (do not use oil based paint or metallic paint). The surface does not need to be treated

## Technical Specifications

- Design: Attachable, paintable, white or clear plastic vanity cover. Conceal AP or antenna
- Includes screw caps and rubber trim
- Construction: Clear Polycarbonate or White UL94-V0 ABS Plastic with UV Cap. Transparent to wireless signal
- Size: 11.9 x 10.6 x 7.6 in. (302 x 269 x 193 mm)
- Made in the USA

### Fits the following AP's:

**Aruba**

AP-535, AP-515, AP-505

**Cisco**

9130AXI, 9130AXE, 9120AXI, 9120AXE, 9117AX, 9115AXI, 9115AXE, 4800 Series, 2800i/3800i Series, 2800e/3800e Series

**Extreme Networks**

AP510C, AP505i / AP510i

**Meraki**

MR52/53, MR36, MR33, MR32/34/42

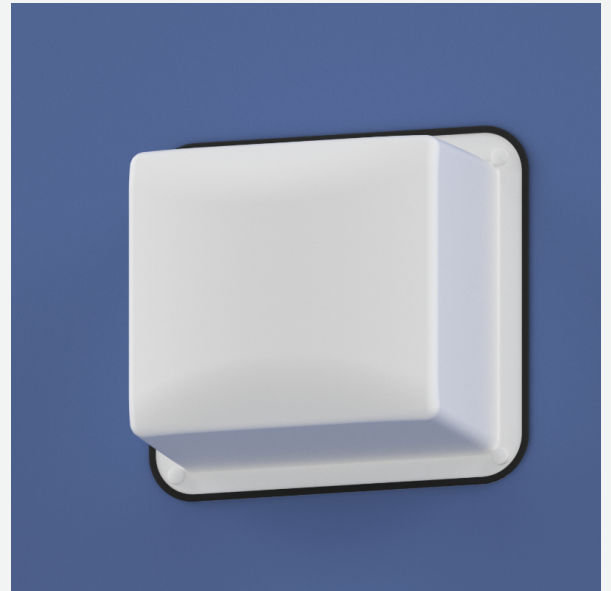
**Ruckus**

R750, R730, R720, R710

Have questions about any of our solutions?

Contact us at **877-867-2312** or **Sales@oberoninc.com**

Shown mounted on wall



3D view for 33-ANT-CVR-WH →

### Measurements (Maximum values\*):

Width: 11.9 in.

Back-box: xx in.

Height: 10.6 in. Depth: 7.6 in.

Item Weight: 2 lbs.

Shipping Weight: 12 lbs.

### Includes:

- (1) 11.9 x 10.6 x 7.6 in. cover
- Rubber trim
- (4) Plastic screw head caps
- Installation instructions