

1046-EXT3935

Locking Suspended Ceiling Tile Wi-Fi Access Point Enclosure with 12.5 x 12.5 x 3 in. Back Box / Extreme 3935 Series AP Door

Collection: Wi-Tile™ | Series: 1046

Economical, locking 2 x 2 ft. suspended ceiling Wi-Tile™ enclosure mounts and secures Wi-Fi and Small Cell APs flush to the ceiling. This steel enclosure replaces a standard ceiling tile, and has a durable white textured powder coat to aesthetically match most ceiling tiles. The interchangeable door simplifies AP and antenna moves, adds, and changes without lifting ceiling tiles. Styles available for both standard flush grid and recessed grid ceilings (-T), and for both North American and European (metric) ceiling systems.

Note: The Model Series 1046 is designed to accommodate current generation APs from leading vendors. As wireless standards evolve, APs are getting larger to accommodate more internal antennas. Oberon has designed the Model 1047 with a larger door to accommodate future generation larger APs. Oberon recommends the Model 1047 for new installations, if future migration to larger APs is likely.



Features & Benefits

- Economical 2 x 2 ft. locking ceiling tile enclosure secures smaller APs from most vendors
- Attractive, textured, powder-coat finish matches many ceilings
- Interchangeable doors permit simple migration to new APs and antennas
- Enclosure back-box is an effective dust barrier to simplify ICRA procedure compliance

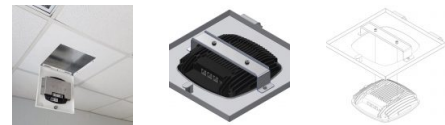
Technical Specifications

- Design: Economical ceiling tile enclosure designed for smaller APs with integrated antennas. AP mounts in interchangeable door. Fits into standard 2 x 2 ft. (U.S.) ceiling grid. Doors available for all leading AP vendor's models (see Oberon's Model 1046 configuration guide)
- Performance: UL listed for low voltage applications, and designed to meet NEC300-22 and 300-23 for plenum installations. OSHPD approved, OPM-0110-13. De-rate AP operating temperature range by 10°C when mounted in enclosure
- Locking, quick release interchangeable door for migration to other APs
- Firestop grommet for insertion into back-box, large enough for 2 Cat6A cables
- 1 in. trade size knockouts in four walls
- Construction: 20 ga. galvanized steel back-box. 18 ga. white, powder-coated steel flange and door. Solid back-box fills opening behind AP, creating an effective fire, smoke and dust barrier to simplify ICRA compliance
- Constructed to be compliant with City of Chicago Environmental Air (CCEA) plenum requirements
- Enclosure must be supported by the building structure, independent of the suspended ceiling, per NEC paragraph 300.11. Includes hanger wire
- Maximum weight inside enclosure is 25 lbs.
- For recessed grid ceilings, specify '-T' for regular flange
- Size: 23.75 x 23.75 x 3 in. (603 x 603 x 76 mm). Back-box is 12.5 x 12.5 x 3 in.
- Specify '-600MM' for European (metric) ceiling (594 x 594 mm tile flange. All other dimensions are the same)
- Made in the USA

Have questions about any of our solutions?

Contact us at **877-867-2312** or **Sales@oberoninc.com**

Shown with AP (not included)



Measurements (Maximum values*):

Width: 23.75 in.
Back-box: xx in.
Height: 23.75 in. Depth: 3 in.
Item Weight: 13 lbs.
Shipping Weight: 17 lbs.

Includes:

- (1) Enclosure and Interchangeable Door
- (1) Mounting Bracket
- (1) Dual Cable Egress Firestop Grommet
- (1) 1 in. Trade Size Conduit Connector
- (4) Hanger Wires
- (2) Keys for Lock
- Access Point Attachment Hardware
- Installation instructions

Patented

Safety & Standards

- UL 2416, Audio/Video, Information and Communication Technology Equipment Cabinet, Enclosure & Rack Systems
- CSA C22.2 NO. 60950-1-07 + Amd. 1 Amd. 2 Information Technology Equipment – Safety. Part 1, General Requirements
- OSHPD Approval OPM-0110-13

Fits the following AP's:

Extreme Networks
AP3935e, AP3935i