

# 33-1021-PMB-CVR

Pole Mount Bracket with white ABS vanity cover for Model 1021-00

Collection: Accessories | Series:

Pole Mount Bracket with white ABS vanity cover for Model 1021-00. Vanity cover conceals the metal pole mount bracket and straps.

## Technical Specifications

- Construction: 16 Ga. Stainless Steel Pole Mount Brackets, UL94-HB White ABS Plastic Cover
- Bracket Size (Each): 13.10 x 3.57 x 1.50 in. (332.7 x 90.6 x 38.1 mm)
- Cover Size (External): 14.25 x 21.95 x 11.00 in. (362.0 x 557.6 x 279.4 mm)
- Made in the USA

### Fits the following AP's:

#### Aerohive

AP110/120, AP20, AP250, AP320, AP330, AP340/350, AP370

#### Aruba

AP-134, AP-135, AP-205, AP-214, AP-215, AP-224, AP-225, AP-228, AP-303, AP-305, AP-314, AP-315, AP-318, AP-324, AP-325, AP-334, AP-335, AP-344, AP-345, AP-505, AP-515, AP-535, AP-555, AP-93H, AP-ANT-17/AP-ANT-18/AP-ANT-25/AP-ANT-35/AP-ANT-35A/ANT-2x2-5314

#### Cisco

1532e, 1532i, 1542i/1542d, 1562d, 1562e, 1562i, 1572eac/1572ec, 1572ic, 1600e/2700e/3500e/3600e/3700e/3700p Series, 1600i/1700i/2600i/2700i/3500i/3600i/3700i Series, 1830e/1850e Series, 1830i/1850i Series, 2800e/3800e Series, 2800e/3800e Series with DART Connector, 2800i/3800i Series, 4800 Series, AIR-ANT2566D4M-R antenna, AIR-ANT2566P4W-R antenna

#### Commscope

ION-E

#### Extreme Networks

460e, 460i, AP305C, AP3705i, AP3710i, AP3715i, AP3765i, AP3801i, AP3805i, AP3825i, AP3935i, AP3965i, AP410C, AP410e, AP410i, AP505i / AP510i, AP510C, AP560h, AP560i, AP650

#### Meraki

MR32/34/42, MR33, MR42E, MR52/53, MR53E, MR62, MR66

#### Mist

AP41

#### Ruckus

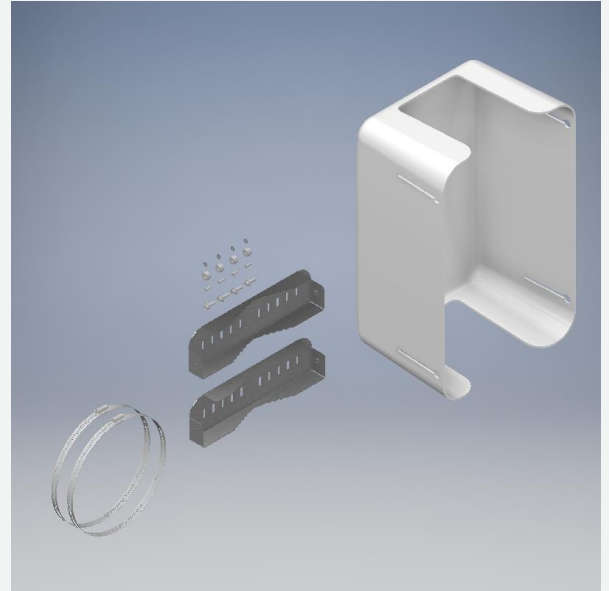
2942 and 7962, 7300 Series and 7025, 7352 and 7372, R310, R320, R510, R550, R610, R710, R720, R850

#### Ubiquiti

UniFi UAP-AC-HD, UniFi UAP-XG

Have questions about any of our solutions?

Contact us at **877-867-2312** or [Sales@oberoninc.com](mailto:Sales@oberoninc.com)



### Measurements (Maximum values\*):

Width: 14.25 in.

Back-box: xx in.

Height: 21.95 in. Depth: 11 in.

Item Weight: 9 lbs.

Shipping Weight: 10 lbs.

### Includes:

- (2) Pole Mount Brackets
- (2) 7-1/8 in. to 10 in. Worm-Drive Clamps
- (4) 1/4-20 x 3/4 in. Hex Head Screws
- (4) M4 x 12 mm Hex Head Screws
- (4) Aluminum 3/8 in. Spacers
- (4) M4 Washers
- (1) Cover with UV Clamp
- Installation Instructions